

21 July 2021

A regular bulletin with news and progress

Polegate – Gainsborough Lane night works

We'd planned to install the new traffic lights at Gainsborough Lane during the daytime over three weeks to reduce disruption to residents. Increased vehicle numbers on the A27 mean that this is no longer a viable option. **Instead, we'll work at night from Monday 26 July to Thursday 29 July and from Monday 2 August to Thursday 5 August 2021 between 8.00pm and 6.00am.** The junction will not be closed but temporary lights will keep road users and our staff safe. At times this work will be noisy. We apologise in advance for any nuisance this will cause.

The improvements at Gainsborough Lane junction include new drainage to reduce the risk of surface water flooding, pedestrian crossings and traffic lights with a dedicated right turn lane to allow safer access for Stud Farm estate. We're also building a new path between Polegate and Firle for walkers, cyclists and horse riders, creating better access to the South Downs National Park and to connect communities along the A27. The improvements at Gainsborough Lane are now due to finish by late October 2021. This is two months ahead of schedule.

Polegate bypass

We're making good progress on the section between Cophall roundabout and Polegate junction. We're using traffic management approaching the roundabout to keep operatives safe while we surface the central reservation and install signs and lighting. We aim to complete this phase by late August 2021. We'll be carrying out final resurfacing and line painting at night between Monday 9 and Friday 20 August 2021. We'll provide more details soon.

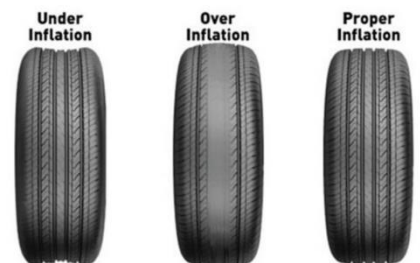
Berwick - Pound Lane

Please don't use Pound Lane as a diversion route during the Station Road closure – it's not suitable. Access has been maintained for residents of Pound Lane and Station Road only.

Tyres under pressure - Check them before you set off

One in five motorway breakdowns are caused by tyre problems. Driving with under-inflated tyres (even as little as 10%): makes your braking distance longer, can make your vehicle harder to steer, uses more fuel and shortens the lifespan of your tyres. For more information, please visit: [Tyre checks - Highways England](#)

Example of damage when tyres are not correctly inflated:



Considerate Constructors



This project site is registered with the Considerate Constructors' Scheme.

Updates

You can ask to be added to our distribution list by emailing a27eastoflewes@highwaysengland.co.uk or by calling our Customer Contact Centre on 0300 123 5000. You can ask to be removed at any time.